

DIVERSITRONICS STROBE LIGHTS & CONTROLLERS

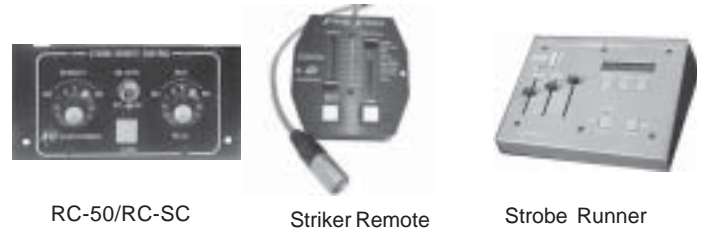
DIVERSITRONICS STROBES

Diversitronics offers a complete line of high performance xenon strobelights for all entertainment applications. The most popular fixtures are shown here. Please contact the sales department for specifications. Most units are available in 120v-220v.

- 135-800 Super Strobe, 600w, 120v 
- 135-805 Mark 2000, DMX, 1500w, 120v 
- 135-815 5000 DMX Strobe 
- 135-825 Dome Strobe Cannon, 120v (like a DATA-Flash) 
- 135-830 PAR64 Strobe Cannon, 120v 
- 135-860 Superstar Strobe, 15 Joule 

ELLIPSOIDAL STROBE MODULES

Plugs easily into an Altman 6" axial ellipsoidal or ETC Source 4 by simply switching end caps and attaching a lightweight (2.2 lbs) external power supply via a 3' pluggable umbilical cable. Flash control signals come from a Diversitronics RC-A controller or directly from a DMX control board.



- 135-854 Strobe Module for Altman
- 134-857 Strobe Module for Source 4
- RC-50/RC-SC
- Striker Remote
- Strobe Runner
- 135-901 RC-50 Controller for Super Strobe
- 135-903 RC-SC Controller for PAR 64 Strobe Cannon
- 135-907 Analog Striker Remote for DMX strobes
- 135-916 Strobe Runner 120v DMX Controller
- 135-918 Strobe Runner 240v DMX Controller
- 135-926 Remote Cable for 135-800, 25 ft
- 135-928 Remote cable for 135-800, 50 ft
- 135-930 Remote cable for 135-800, 100 ft
- 135-935 Y-Splice for 2 Strobes 135-800
- 905-100 Lamp for Super Strobe
- 905-102 Lamp for 5000 DMX
- 905-080 Lamp for Mark 2000
- 905-106 Lamp for Superstar Strobe
- 905-108 Lamp for Strobe Cannon
- 905-110 Lamp for Ellipsoidal Strobe Module

ADJ STROBES

SF STROBES

Random flashes at approximately 1 per second. Rated at 10 million flashes. Clear lens is standard. SF-1 has 2' power cord and standard plug. SF-2 has screw base socket.

- DJ5-315 SF-1 Hanging Strobe
- DJ5-320 SF-2 Screw base strobe



BIG SHOT

45 watt strobe, nonlinkable.

- DJ5-375 Big Shot



SNAP SHOT II

70 watt strobe with variable speed control. Similar housing to Big Shot.

- DJ5-346 Snap Shot II



MEGA FLASH DMX

800 watt strobe with 2 DMX channels for speed and dimming. Sound active.

- DJ5-300 Mega Flash DMX



S-81

Bright 25w compact strobe. Speed knob for adjusting flash rate.

- 136-050 S-81 Mini Strobe



SS-DMX/19C STROBE CONTROLLER

16 American DJ Snap Shot/DMX, Mega Strobe/DMX, or S-1000/DMX, can be controlled with this unit. Control dimming, speed, full-on, blackout, 65 built-in programs, and microphone sensitive adjustment.

- DJ5-421 SS-DMX/19C

ROPE LIGHTS



ROPE LIGHT RL-11

12ft. smooth standard duty rope light consisting of 40 lamps. 4 circuit, flexible tubing, with round 5 pin connectors. Connect up to 14 pieces. Comes in clear, red, blue, green, amber, and clear with multi-colored lamps.

134-401 Clear	134-402 Red
134-403 Blue	134-405 Amber
134-406 Green	134-407 Multicolor



ROPE LIGHT RL-160

16ft. heavy duty crush resistant rope light consisting of 60 lamps. 4 circuit, with round 5 pin connectors. Connect up to 10 pieces. Tubing is made of a durable, ridged crush resistant plastic. Comes in clear, red, blue, green, yellow, and clear with multi-colored lamps.

134-431 Clear	134-432 Red
134-433 Blue	134-435 Yellow
134-436 Green	134-437 Multicolor

BASIC ROPE LIGHT CONTROLLERS

Basic rope light controller for 3 RL-11s or 2 RL-160s. Will chase in 4 channel sequence. Adjustable speed control.
 134-423 RL-1 Basic Controller



Basic rope light controller for 6 RL-11 or 4 RL-160. Will chase in 4 channel sequence. Adjustable speed knob will change chase speed.

134-425 RL-10 Controller



DELUXE ROPE LIGHT CONTROLLER

Deluxe rope light controller for for 14 RL-11 or 10 RL-160. Will chase in 4 channel sequence. Adjustable dials for speed, forward, reverse and sound chase.

134-427 RL-101 Deluxe Controller



ROPE LIGHT ACCESSORIES

- 134-409 10' Rope Extension
- 134-410 "Y" Adapter
- 134-413 Round to Square Adapter

MIRROR BALLS, PIN BEAMS & BEACONS

- 133-015 8" Mirror Ball
- 133-025 12" Mirror Ball
- 133-030 16" Mirror Ball
- 133-035 20" Mirror Ball



- 133-101 Motor for 12" - 1rpm
- 133-103 Standard 1rpm motor
- 133-150 Battery Operated Motor for 8" Ball



- 120-009 Pin Spot, 30 watt
- 120-010 ETL Listed Pin Spot, 30 watt
- 120-015 Pin Spot w/ Color Wheel

- 134-256 6" Beacon - Red
- 134-257 6" Beacon - Blue
- 134-258 6" Beacon - Green
- 134-259 6" Beacon - Yellow
- 134-261 8" Beacon - Red
- 134-262 8" Beacon - Blue
- 134-263 8" Beacon - Green
- 134-264 8" Beacon - Yellow



BLACKLIGHTS



ALTMAN BLACKLIGHT FLOODLIGHT

Altman's UV-705 is a compact, high output, 400 watt blacklight. It is designed to provide high intensity illumination of fluorescent materials at **distances up to 150 feet**. Fixture is equipped with an accessory holder and an integral wire mesh safety screen in front of the lens. The ballast is installed in the housing. 3 foot cord with Edison connector and on/off switch are included as well as safety cable and color frame. This unit is extremely quiet and rugged with an automatic safety cutoff switch. Beam adjustment goes from narrow to wide with one reflector. The UV-705 also has a unique intensity control to divert light output to a horizontal level.

134-225 Altman Focusing-Flood Blacklight UV-705
908-640 Blacklight lamp, 400 watt



AMERICAN DJ UV CANON BLACKLIGHT

400 watt Super High output Blacklight
Ideal for large venues
comes with hanging bracket

DJ2-165 UV Canon Blacklight
908-650 Blacklight lamp, 400 watt



ELATION UV WASH BLACKLIGHT

This award-winning aluminum die cast fixture provides 100 watt output and wide coverage. Features include glass reflectors and a shatter proof frosted glass cover along with convection cooled vents.

134-230 UV Wash Blacklight
908-636 Blacklight lamp, 100 watt

FLUORESCENT BLACKLIGHTS



134-201 24" Blacklight
908-615 24" Blacklight - tube only



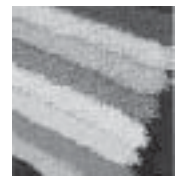
DJ2-167 48" Blacklight



134-204 48" Double tube and fixture
908-600 48" Blacklight - tube only



134-208 Blacklight in a STEEL carrying case with hinged cover, handle, and on/off switch



BLACKLIGHT PLASTICS

Bead-sized fluorescent plastic bits - each one a colorful glowing light source. A powerful visual highlight on any surface, a dramatic moving light effect when they travel through the air. Extraordinary to view, easy to capture on film or video. Use as raw material to mold custom shapes.

Available in quarter pound packages in a variety of colors.

314-145 Red 1/4 lb.
314-146 Orange 1/4 lb.
314-147 Pink 1/4 lb.
314-148 Yellow 1/4 lb.
314-149 Green 1/4 lb.
314-150 Blue 1/4 lb.
314-151 Violet 1/4 lb.
314-152 Invisible Blue 1/4 lb.
314-153 Black 1/4 lb.

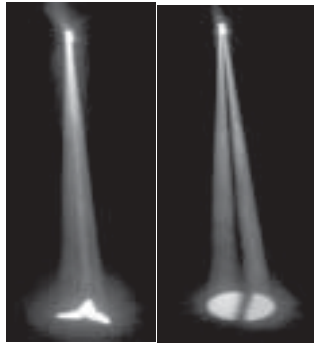
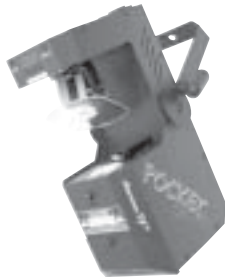
INTELLIGENT LIGHTING



ROSCO I-CUE

This unit slides into the color slot of the ETC Source 4, Altman Shakespeare, or Strand SL. The I-Cue repositions the beam of light so a single spotlight in a fixed position can be used for multiple specials in dozens of locations. It contains onboard DMX, so the pan and tilt can be controlled directly from your lighting console. The unit requires a power supply, and multiple I-Cues can be daisy chained to one power supply.

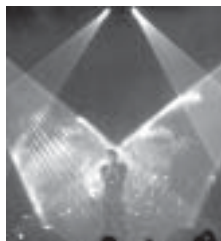
135-700 I-Cue Intelligent Mirror



ADJ POCKET SCAN

The most compact full featured scanner ever. This unit is a scanner and laser in one. It features 15 colors + white including split colors, 14 gobos, stand alone or sound active, plus a 5mw laser diode. All this for such an affordable price.

DJ2-703 Pocket Scan

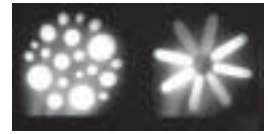


CLAY PAKY MINI SCAN HPE

An intelligent moving mirror luminaire with a 300w HTI lamp. Features include 36 color combinations, two frost filters for two diffusion levels, two color temperature correction filters, six rotating gobos which are fully interchangeable, 150 degree pan and 110 degree tilt.

135-725 Mini Scan HPE HTI 300 (120V)

MARTIN PROFESSIONAL



ROBOSCAN PRO 918

This powerful yet compact scanner uses the MSR-575 making it the brightest in its class. With a 5 position rotating gobo wheel plus open, a 9 position static gobo wheel plus open and 2 motorized color wheels, the possibilities are endless.

135-445 Roboscan Pro 918



ROBOCOLOR PRO 400

Housing two dichroic color wheels, the RoboColor Pro 400 can generate 32 intense colors and hues. DMX controllable, Martin protocol, or stand-alone operation (automatic or sound triggered). Uses 200w MSD lamp.

135-525 Robocolor Pro 400

MX-1

This scanner features a bright 250w halogen lamp and combined color/gobo wheel (18 gobos, 10 colors/3 split colors + 5 white). Other cutting edge features include 230 degree pan for a wider range of motion, a very smooth digital dimmer (0-100%) and more - all at an affordable price!

135-440 MX-1 Scanner



ELATION PROFESSIONAL



STAGE COLOR PAR

Equipped with 3 DMX channels and built-in dimming capability, the Stage Color features 3 dichroic colors (red, green & blue) with color mixing ability, and 3 operating modes. With these innovative options, the Stage Color can easily project any color combination to intensify and enhance the background for any theater, film, or stage lighting presentation.

Because it is a DMX fixture, the Stage Color can be used with any DMX controller. The Stage Color's DMX color changing channels make it extremely fast and easy for the user to change the background lighting.

Requires 3 lamps per fixture

124-450 Stage Color Par - Black Aluminum w/o lamps
124-455 Stage Color Par - Black Aluminum w/lamps
866-410 HX 600 lamp
also available in polished aluminum

POWER WASH 250

The Power Wash 250 moving-head unit from Elation lighting is controlled with 14 channels of DMX. It features full 16-bit movement resolution, with Pan of 530 degrees (in 2.65 seconds) and Tilt of 280 degrees (in 1.68 seconds). The fixture has a 4 digit LED display for addressing, special functions, effects calibration, etc



The Power Wash 250 Features:

- Mechanical dimming from 0-100%
- High luminous-efficiency parabolic reflector
- 150 mm Fresnel lens
- Full CYM color mixing system
- 8 dichroic filters plus white
- 180 degree beam shaper
- Frost filter for softer beam
- Variable speed strobe effect
- Linkable
- 16 preset DMX movements
- Sound activated built in programs
- Mechanical High Speed shutter
- Strobe and Pulse effect
- Voltage: 115V/60Hz

136-620 Power Wash 250
915-250 ZB-MSD250 250 watt, 8500K, 2000hr lamp

POWER SPOT

These moving-head fixtures from Elation lighting are controlled with 16 channels of DMX, and feature full 16-bit movement resolution, with Pan of 530 degrees and Tilt of 280 degrees. The fixture has a 4 digit LED display control panel for addressing, special functions, effects calibration, etc.



Available in 575w and 250w models

The Power Spot 575 Features:

- Smooth dimming from 0-100%
- 15 degree beam angle
- Remote Focus via DMX
- 11 Colors + White
- UV Filter
- Color Scroll
- Split Colors
- 16 Gobos on 2 Wheels
- Wheel 1:
 - 7 interchangeable Rotating/Indexing Gobos, 3 Lithographic, 1 Glass, 3 Metal
- Wheel 2:
 - 9 interchangeable Static Metal gobos
- Convenient Slot-lock gobo replacement system
- Gobo Scroll
- Gobo Shake Effect
- Gobo Overlaying
- 4.9mW Red Laser w/ pulse effect
- 3 facet prism rotating in both directions at variable speeds
- Variable speed strobe effect
- Linkable up to 16 units
- Sound activated built in programs
- Mechanical High Speed shutter & pulse effect
- Strobe and Pulse effect
- Voltage: 120V/220v (50/60Hz)



The Power Spot 250 Features:

- Smooth dimming from 0-100%
- 15 degree beam angle
- Remote Focus via DMX
- 11 Colors + White
- 6 Gobos + Spot
- 16 Gobos on 2 Wheels
- 4 metal gobos, 1 glass gobo and 1 multi-colored dichroic gobo
- Color & Gobo Scroll
- Gobo Shake Effect
- 4.9mW Red Laser w/ pulse effect
- Variable speed strobe effect
- Linkable
- Sound activated built in programs
- Mechanical High Speed shutter
- Strobe and Pulse effect
- Voltage: 115V/60Hz



136-610 Power Spot 575
136-600 Power Spot 250
911-230 HTI 575/DE 500 watt, 5600K, 500 hr lamp
915-250 ZB-MSD250 250 watt, 8500K, 2000hr lamp

MARTIN PROFESSIONAL



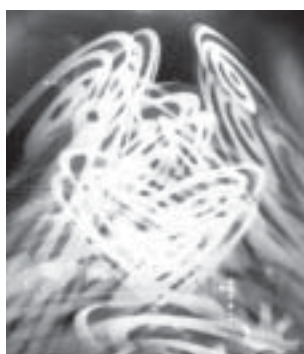
MAC 550

The MAC 550 features unprecedented illumination for a 400W fixture along with astounding graphics and animation.

- Motorized zoom (14 to 30 degrees)
- Gobo animation wheel with full movement / direction control
- 2 x 8 slot replaceable color wheels, plus open
- 1 x 6 position rotating gobo wheel, plus open
- 1 x 9 position static gobo wheel, plus open
- Rotating Replaceable Prism
- Dimmer / Shutter
- Remote Focus
- Motorized Iris
- 540 degrees Pan x 246 degrees Tilt

135-577 MAC 550 moving head w/lamp

915-148 HTI 400/D3 Lamp



MAC 500

A host of unique internal effects includes two motorized color wheels, one with 9 replaceable color slots, offering a total of 14 dichroic colors and four dichroic CTC filters to yield 76 mixable colors. Added to this are two motorized gobo wheels with 5 interchangeable indexible rotating gobos and 9 replaceable metal gobo slots. Uses 575w MSR or MSD lamp.

135-575 MAC 500 moving head

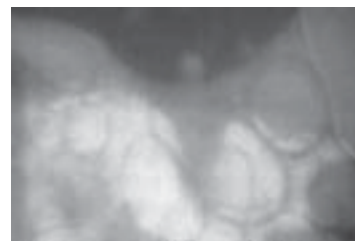


MAC 600

The Mac 600 washlight incorporates the well proven CMY color mixing system to create virtually unlimited shades and color choices, ensuring ultra-smooth, uniform color mixing. Add two combinable beam shaping filters plus frost and you have an unrivalled range of lighting effects.

135-580 MAC 600 moving head w/lamp

DJ/CLUB LIGHTING



GROOVE WHEEL

Professional Oil Wheel projector. Create multi-colored, psychedelic patterns on a wall or any surface. Continuous rotation of enclosed oil wheel, focusing lens.

DJ4-283 Groove Wheel



LASER WIDOW

4.9mW portable mini red laser with 16 geometric patterns. 3 modes - Auto, Music or Manual.

135-210 Laser Widow

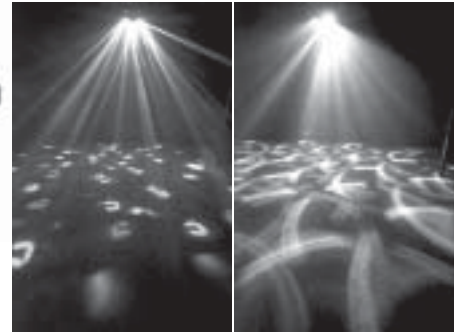
DJ/CLUB LIGHTING



AGGRESSOR

A spectacular effect ! This unit has 20 lenses that produce 40 beams of multi-colored light that criss-cross to the beat of the music via an internal microphone.

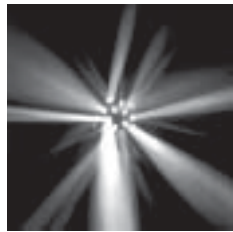
134-374 Aggressor



MILLENNIUM

This incredible centerpiece features 40 beams that move and change colors. Perfect for clubs and even home parties. With its internal microphone it will dance all night.

DJ4-303 Millennium



VERTIGO

Ideal for mobile applications, the Vertigo has 30 beams of rotating and criss-crossing, multi-colored light. This unit is also sound active.

135-260 Vertigo



LOTUS

This multi-colored triple lens unit shoots 60 tunnel beams of light covering a very wide area. Sound active.

DJ4-197 Lotus



MYSTIC

Produces 30 beams of light that criss-cross back and forth to the beat of the music.

135-340 Mystic



STARBALL II

Projects beams of light on the walls just like a mirror ball effect, without having to shine a pinspot on it. Built-in rotating motor.

135-300 Starball II



HELICOPTER/SPINNER LIGHT

A favorite in clubs and at parties since the dawn of disco. Narrow beam lights rotate to produce swirling light in a circular motion. Designed for ceiling or floor mount, these fixtures are all metal construction with 60 RPM motors, dual power cords, edison plugs, dual fuses, color lenses and PAR 36, 6 volt lamps.

134-349 4 light Helicopter

134-351 6 light Helicopter



SUNRAY II

Similar to the Starball, but with larger lenses and stronger, brighter beams. A great alternative to a mirror ball.

135-350 Sunray II